

EAT•N®

Powering Business Worldwide™

5L

650 / 850 / 1200

Uninterruptible Power Supply



Important safety instruction - Read before installing product

Safety of persons

- The UPS has its own internal power source (the battery). Consequently, the power outlets may be energized even if the UPS is disconnected from the AC-power source.
- Dangerous voltage levels are present within the UPS. It should be opened exclusively by qualified service personnel.
- The UPS must be properly earthed. Measurements are required to ensure that the total leakage current of the UPS and the protected equipment does not exceed 3.5mA by checking their characteristics.
- The battery supplied with the UPS contains small amounts of toxic materials. To avoid accidents, the directives listed below must be observed:



- Never burn the battery (risk of explosion).
- Do not attempt to open the battery (the electrolyte is dangerous for the eyes and skin).
- Comply with all applicable regulations for the disposal of the battery.
- Batteries constitute a danger (electrical shock, burns).

The short-circuit current may be very high. Precautions must be taken for all handling: remove watches, rings, bracelets and any other metal objects, use tools with insulated handles.

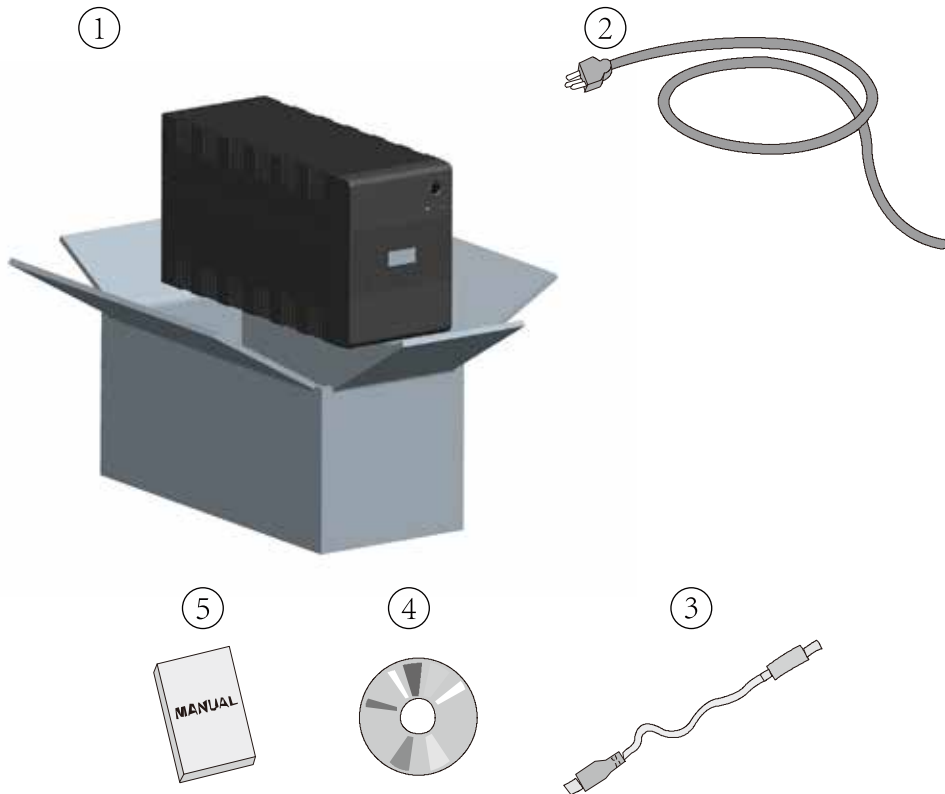
Product safety

- The UPS connection instructions and operation described in the manual must be followed in the indicated order.
- UPS must be connected to a nearby wall outlet that is easily accessible. The UPS can be disconnected from the AC-power source by removing the power cord.
- Check that the indications on the rating plate correspond to your AC-power system and to the actual electrical consumption of all the equipment to be connected to the UPS.
- Never install the UPS near liquids or in an excessively damp environment.
- Never let a foreign body penetrate inside the UPS.
- Never block the ventilation grates of the UPS.
- Never expose the UPS to direct sunlight or source of heat.
- If the UPS must be stored prior to installation, storage must be in a dry place.
- The admissible storage temperature range is -10°C to $+40^{\circ}\text{C}$.

Special precautions

- Once installed and connected to the AC power source for the first time, the battery will start to charge. Full charging to obtain the rated battery backup time requires at least 8 hours.
- Before and after the installation, if the UPS remains de-energized for a long period, the UPS must be energized for a period of 24 hours, at least once every 6 months (for a normal storage temperature less than 25°C). This charges the battery, thus avoiding possible irreversible damage.
- During the replacement of the battery module, it is imperative to use the same type and number of element previously mounted in the UPS, in order to maintain an identical level of performance and safety. In case of doubt, don't hesitate to contact our after sales department (for more information, refer to the web site powerquality.eaton.com).

Unpacking and contents check



(1) Eaton 5L UPS

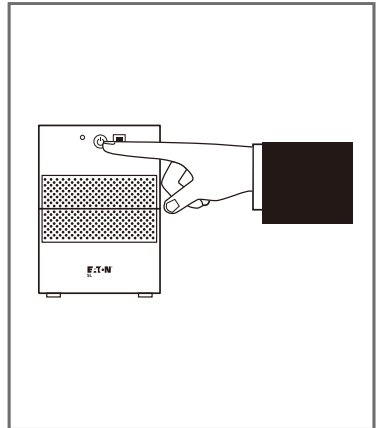
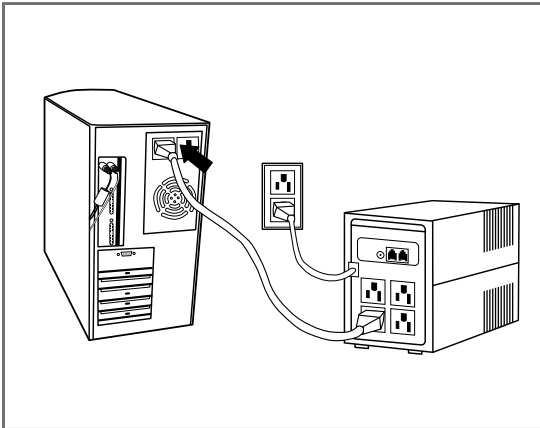
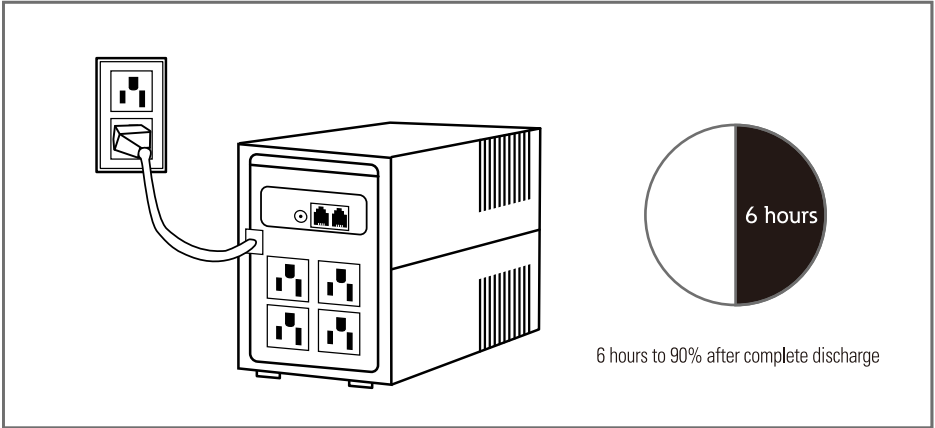
(2) Input power cord (Applicable to BS plug (5L1200ASE) and Schuko plug (5L1200UNI))

(3) USB communication cable

(4) Winpower CDROM.

(5) User manual

Quickstart



System description

5L 650/850(PH)

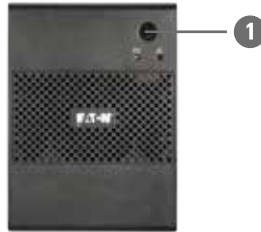
1 ON/OFF button



2 USB power management port

5L 1200(PH)

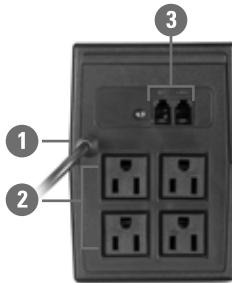
1 ON/OFF button



5L 650/850(PH)

1 Fixed power cord

2 4 Outlets with battery backup (5-15 NEMA)

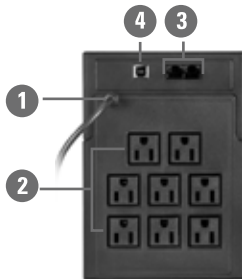


3 modem line protection

5L 1200(PH)

1 Fixed power cord

2 8 Outlets with battery backup (5-15 NEMA)



3 Internet/modem line protection

4 USB power management port

System description

5L 650/850(ASE/UNI)

1 ON/OFF button

1



2 USB power management port

5L 1200(ASE/UNI)

1 ON/OFF button

1



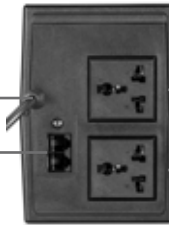
5L 650/850(ASE/UNI)

1 Fixed power cord

2 2 Outlets with battery backup(universal)

1

3



3 modem line protection

5L 1200(ASE/UNI)

1 Inlet

2 4 Outlets with battery backup (universal)

1

2



3 Internet/modem line protection

4 USB power management port

Troubleshooting

Symptom	Possible cause	Remedy
No LED display on the front panel	1. Battery weak	1. Charge battery up to 8 hours
	2. Battery defect or aging	2. Replace with the same type of battery
	3. Power switch is not pressed	3. Press the power switch again
Alarm buzzer beeps continuously when AC supply is normal	Overload of the UPS	Verify that the load matches the UPS capability specified in the spec
When power failure, back-up time is shorten	1. Overload of the UPS	1. Remove some noncritical load
	2. Battery weak	2. Charge battery up to 8 hours
	3. Battery defect or aging	3. Replace with the same type of battery
AC supply normal but LED is flashing	Power cord is loose	Reconnect the power cord properly

Specifications

Model		5L650ASE 5L650UNI 5L650PH	5L850ASE 5L850UNI 5L850PH	5L1200ASE 5L1200UNI 5L1200PH
Capacity	VA/W	650VA	850VA	1200VA
		360W	480W	600W
Input	Input voltage range	160-290V		
Output	Output on battery	230V		
	Voltage regulation (bat. mode)	+/-10%		
	Frequency	50Hz or 60Hz		
	Frequency regulation (bat. mode)	+/-1 Hz		
	Output waveform	Simulated sine wave (quasi square wave)		
Battery	Battery type	(1)12V 7Ah	(1)12V 9Ah	(2)12V 7Ah
	Recharge time	6 hours to 90% after complete discharge		
Communication	USB	Yes		
Transfer time	Typical	2-6ms typical, 10ms max.		4-8ms typical, 10ms max.
Indicator	AC mode	Green lighting		Green lighting
	Battery mode	Green flashing		Yellow flashing
Surge suppression	RJ11 and RJ45 protection	RJ11		RJ45
Audible alarm	Backup mode	Sounding every 10 seconds		
	Low battery	Sounding every 1 second		
	Overload	Sounding every 0.5 second		
	Fault	Continuously sounding		
Protection	Full protection	Deep discharge, overcharge, and overload protection		
Physical	Dimensions H*W*D	140*100*278		191*139*359
Weight	Net weight	4.3kg	5.1kg	8.9kg
Environment	Operating environment	0°C - 40°C		
	Noise level	Less than 40dB		
Back up time	For a 100W load	16min	20min	30min